

Plus<sup>+</sup> SERIES

Digital printing at its best!



*Aura Max Plus<sup>+</sup>*

Blanket Digital Printing Machine

# Main Attraction of Aura Max Plus



Plus+ SERIES

8 Colors High Resolution

SPEED MORE THAN  
**70 Sq.mtr./hr.**

Economical Production

**LOW MAINTENANCE COST**

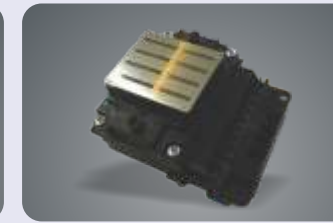
- Positive ink pressure system • EPSON 8 Colours printhead
- Higher resolution & Wider Gamut • Four print heads giving higher speed
- Robust Design • NeoStampa Rip Software • Variable dot
- True Colours, Sharpest Prints & Consistency



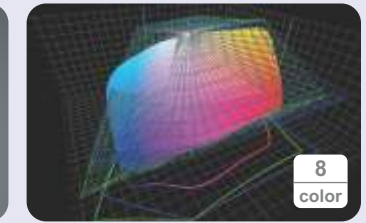
High Speed



Positive ink pressure system



EPSON Printhead 8 colours



Wide Gamut



Easy To Use



Degassing System



Pneumatic Feed & Fabric Takeup



Under Fabric Heater & Tunnel Dryer

## Aura Max Plus+



- CTPC SYSTEM
- PALLET PRINTING & ROLL TO ROLL
- ADJUSTABLE HEIGHT

8  
color

5kg  
Ink Supply

High Speed

Low cost

Super dryer

Easy to use

# Aura Max Plus High Speed Digital Textile Printers

Specifications		AURA MAX Plus
Print system	Printhead type	Micro piezo technology, gold generation printhead
	Ink droplet size	Variable droplets, 1.5~27pl
	Printhead	<b>4X Epson 8 Channel</b> gold generation printhead, 300 Nozzles per channel, Single flow Valve, No dampers, High Resolution.
	Number of nozzles	9600 nozzles
	Ink colour	8 Colors (CMYK+OB+LmLk)
	Printing width (cm)	180
	Height Adjustment	5 cm
Speed (64" width, small Enclosure)	360X1200dpi	70 sq. mtr per hour
	360X1800dpi	50 sq. mtr per hour
	720X1200dpi	38 sq. mtr per hour
Ink supply & ink	Ink supply type	Unique positive ink pressure system for EPSON printheads
	Ink tank	5 liter/colour
	On-line degassing system	3M Membrena® USA improves the inks runability & breaks the air bubbles in the ink
	Ink type	Reactive/Disperse/Acid/Pigment
	Flexible Ink Gutter	-
Structure and Function	Roll to roll type	Yes and Pallet Printing
	Opening Roller	Fabric is fed through this roller to ensure correct tension and opening
	Pneumatic Feed & Fabric Take-up	Ensure even fabric tension
	Under Fabric Heater and Tunnel Dryer	Quick drying of fabric for higher speed
	Printing paper & film	-
	Low ink warning alarm	Yes
	Software & System	Operating system
RIP software		NEOSTAMPA (Recommended)
Voltage		AC220-240V 50-60HZ or AC110-120V 50-60HZ
Operating environment		Temperature: 15~25 degree centigrade; Humidity : 60~70%

Aura Ink	Cyan	Magenta	Yellow	Black	Orange	Blue	Red	Gray	Fluorescent Y	Fluorescent N
Reactive Ink	●	●	●	●	●	●	●	●	-	-
Acid Ink	●	●	●	●	●	●	●	●	●	●
Sublimation Ink	●	●	●	●	●	●	●	●	●	●
Pigment Ink	●	●	●	●	-	●	●	-	-	-

Tone colors available

## Aura Max Plus

Mechanical Structure	
Belt system	Using Habasit® industrial belt, an adhesive belt transport system, with edge alignment.
Belt Cleaning Unit	The washing unit in stainless steel, a rotating brush washing unit with open water circuit prevents 'back printing' by removing the excess of ink from the adhesive blanket. The entire washing unit is mounted on rolls and can be extracted with ease for inspection and cleaning.
Hot air infrared dryers	A hot air infrared dryer just after the washing unit to dry out water traces from the belt, and pre-heat the blanket's surface to optimal working temperature of the thermoplastic adhesive.
Lighting	LED lights for platform + Lazer guide
Feeder & Take-up	
CTPC	Constant tension pasting cloth device for knitted fabric, it can give a low, constant tension into the knit
Enhance take-up	It has a wide range of tension adjustment, roll diameter 400mm, more than 100kg.
Expander Roller	The expander roll can remove wrinkles, while opening the fabric, the fabric will be smooth.

# Aura Designs Ltd.

102, Bldg. No 19, Hua Guang Garden, 3297, Hong Mei Road  
Shanghai 201 103 CHINA. Phone: +86 (21) 672 85 659  
FAX : +86 (21) 612 94 590, E-mail: info@auradesignsltd.com

[www.auradesignsltd.com](http://www.auradesignsltd.com)



\*The data here is subject to change without notice & is only for reference

designed by: [www.creativviews.com](http://www.creativviews.com)